



OAKFIELD



Mutton Hall Hill, Heathfield, TN21 8NE

Guide Price £200,000



Mutton Hall Hill, Heathfield, TN21 8NE

Guide Price: £200,000 - £215,000

This stunning and modern 2-bedroom apartment offers stylish, move-in-ready living in a peaceful yet central Heathfield location—just a short stroll from the High Street.

Updated throughout with brand-new flooring and modern radiators, the property also features a contemporary kitchen and bathroom, both offering ample storage and sleek finishes.

The spacious lounge is filled with natural light thanks to large windows and opens onto a private balcony—perfectly sized for a bistro-style table, ideal for enjoying morning coffee or just relax during the day.

Both bedrooms are well-proportioned, and the overall layout is both practical and inviting. The apartment also includes a private garage, providing excellent storage or secure parking.

Set in a quiet position with far-reaching views across to the South Downs, this home is also just moments from local supermarkets, cafes, and other everyday amenities.

This is a fantastic opportunity for first-time buyers, downsizers, or investors seeking a beautifully finished home in a prime Heathfield location.





Living Room

18'8" x 12'4" (5.70m x 3.76m)

Kitchen

10'11" x 7'4" (3.33m x 2.24m)

Bedroom 1

14'4" x 11'6" (4.39m x 3.53m)

Bedroom 2

11'1" x 7'6" (3.38m x 2.29m)

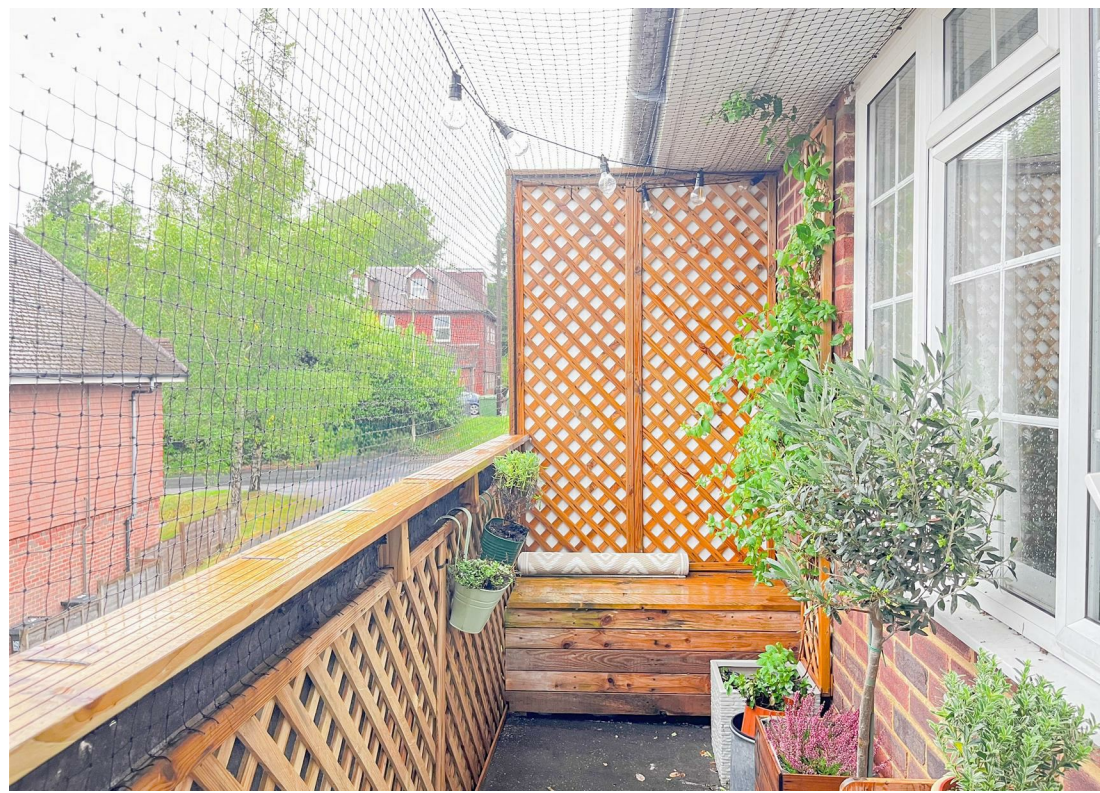
Bathroom

7'10" x 5'6" (2.41m x 1.68m)

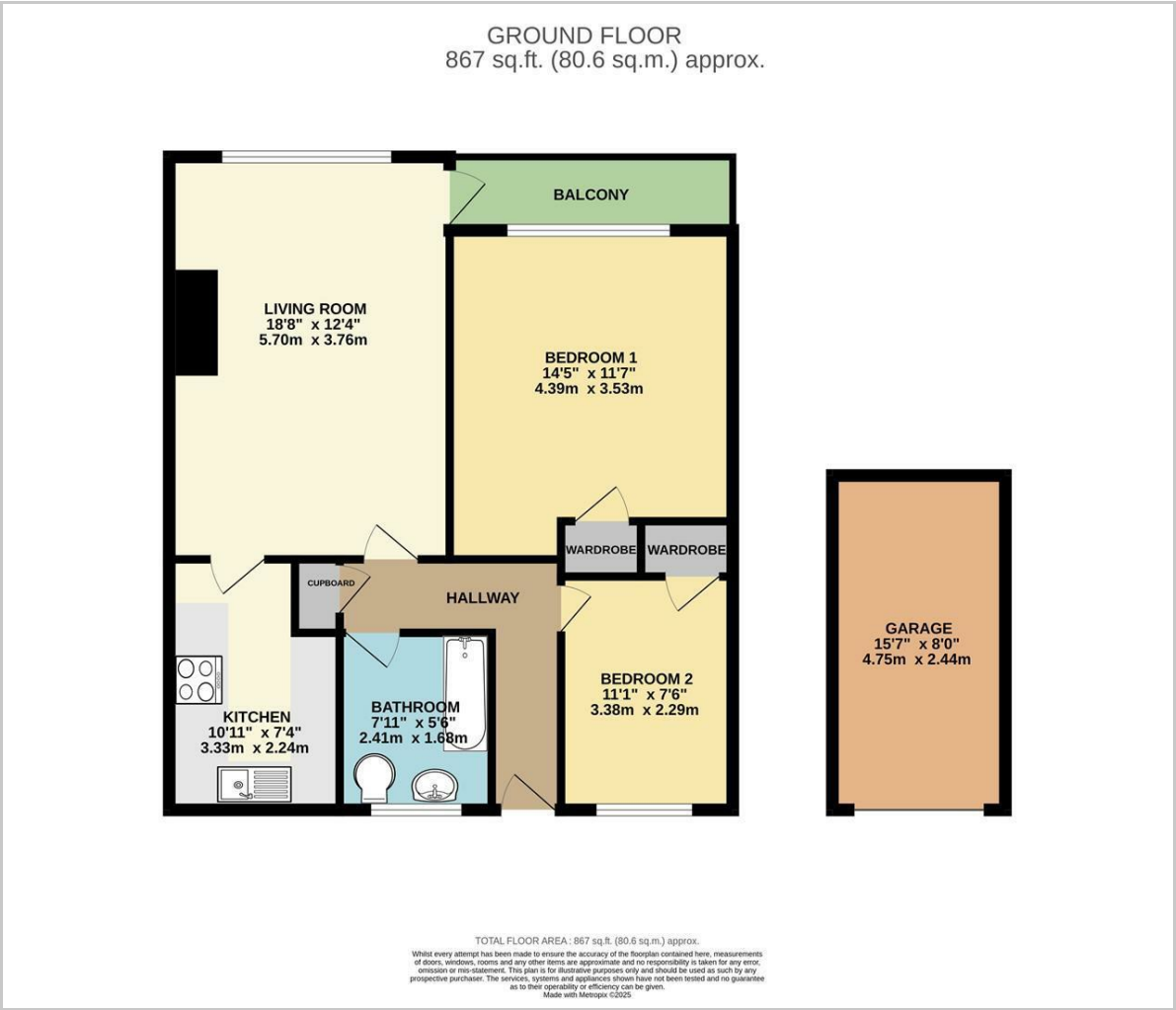
Garage

15'7" x 8'0" (4.75m x 2.44m)

Council Tax Band B - £2029 Per Annum



Floor Plan

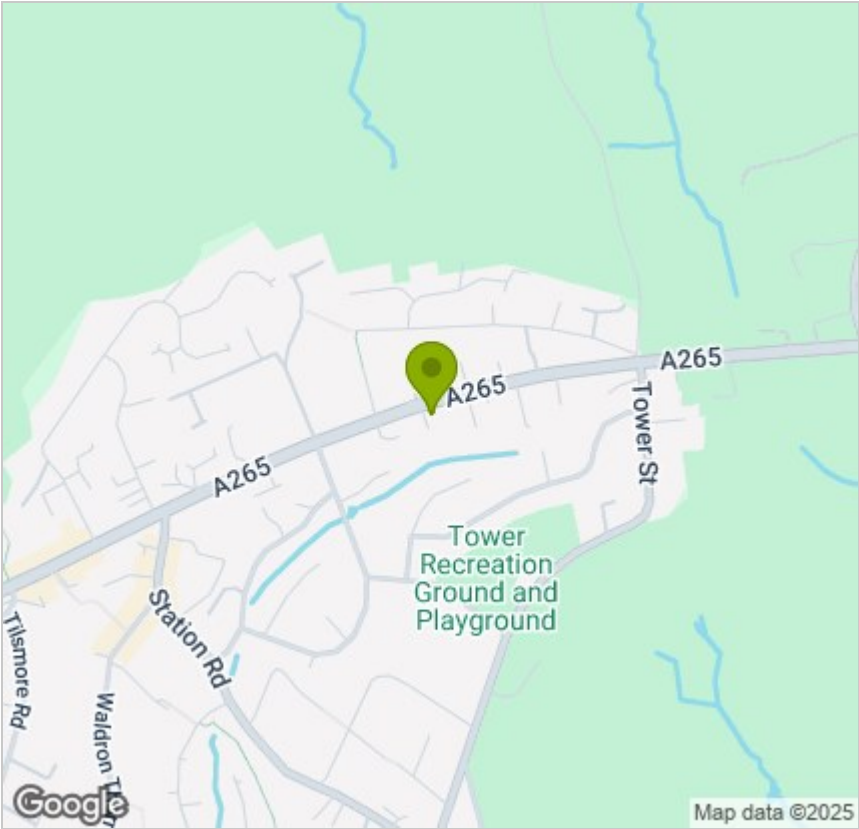


Viewing

Please contact us on 01435 864233
if you wish to arrange a viewing appointment for this property or require further information.

These particulars, whilst believed to be accurate are set out as a general outline only for guidance and do not constitute any part of an offer or contract. Intending purchasers should not rely on them as statements of representation of fact, but must satisfy themselves by inspection or otherwise as to their accuracy. No person in this firm's employment has the authority to make or give any representation or warranty in respect of the property.

Area Map



Energy Efficiency Graph

